

Technical Specifications	OL9570	OL9550
Diameter of lights (mm)	700	500
Illumination (Lux)	160,000	160,000
Color temperature (K)	4,300	4,300
Color rendering Index (Ra, %)	95	95
Diameter of light spot (D10, mm)	250	200
LED power (W)	160	80
Illumination depth(mm)60%	≥600	≥400
Illumination depth(mm)20%	≥1,400	≥1,400
LED service life (hours)	70,000	70,000
Illumination of background light (Lux)	≥30	≥30
The quantity of LED bulbs	160	80
Minimum installation height of operating room (mm)	2,800	2,800
10 degree adjustment on the lighting illumination	30% to 100%	30% to 100%
Temperature rise in the surgical area surface (°C)	1.5±0.5	1.5±0.5
Temperature rise in the area of the surgeon's head (°C)	1±0.5	1±0.5



#### CORPORATE HEADQUATER

##### HEYER Medical AG

Carl-Heyer-Str. 1/3, 56130 Bad Ems, Germany  
www.heyermedical.de

#### HEYER Medical AG

Carl-Heyer-Str. 1/3, 56130 Bad Ems, Germany  
Tel: +49 2603 791 0  
Fax: +49 2603 791 200  
info@heyarmed.com

#### HEYER Medical Co., Ltd.

No.10, Chaobai Street, Yanjiao Development Zone  
065201, Sanhe City, Hebei, China  
Tel: +86 10 5841 1198  
Fax: +86 10 6371 8989  
marketing@heyarmed.com

AOL9500-2103

CE



## Purelit OL9500

### Series LED Surgical Lights







Purelit OL9500 is a surgical light with advanced technology, meeting the requirement of high-end users.

- 15 patents obtained
- Received Red Star Design Award 2010
- High-tech Produce Star by Beijing Government in 2013

# Purelit OL9500



# Features

## Performance

It is easy-to-use with shadowless effect. Its design also minimizes overheating and optimizes airflow for a better hygiene.

## Quality

It has transparent light screen with special coating which allows easier cleaning and sterilization on all surfaces. Imported spring arm ensures the high product quality.

## Precise

Its advanced patent focus technology enables clear vision of cavity.

## Clearness

Its white LED light with no colored cast shadows guarantees clear vision of tissues.

## Safety

It has separately controlled multi-lens matrix electronic circuit to prevent total light malfunctioning, ensuring patient safety.

## Comfortable

Its control panel is easy to operate which provides unparalleled experience for surgeons.

## Durable

It has long LED life expectancy which makes the product more reliable and cost-effective.

## Efficient

Low power consumption and durable LEDs minimize the impact to our environment.

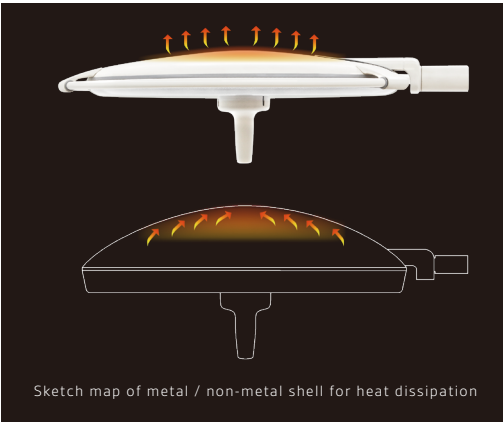
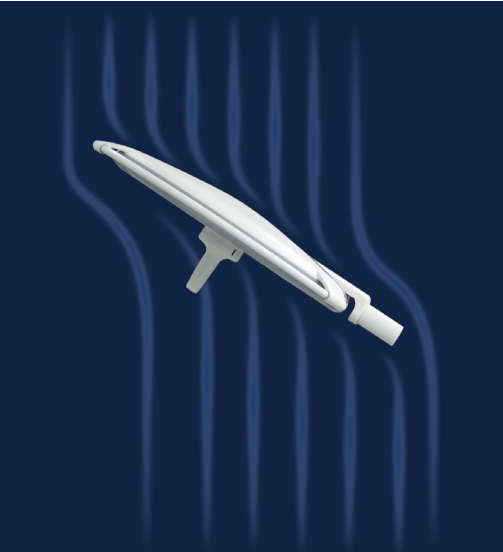
## Adaptability

It supports low height ceiling mounting and it is compatible with HD camera.



## Performance

OL9500 has a large light head which consists of 20 matrix lens lighting modules with 160 LED bulbs. For the smaller version, the light head consists of 10 matrix lens lighting modules with 80 LED bulbs. This structure provides excellent experience of all-dimensional shadowless lighting with no dead corner. Its ultra-thin and streamlined light head provide low wind resistance to enable laminar flow. This allows the laminar flow to reach the surgical wound area stably, preventing cross infection. The shell of lighthead is made of aluminium alloy with outstanding heat dissipation capability, extending the life of LED and increasing the efficiency of illumination.

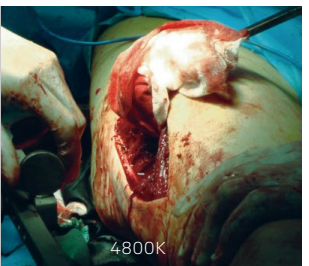
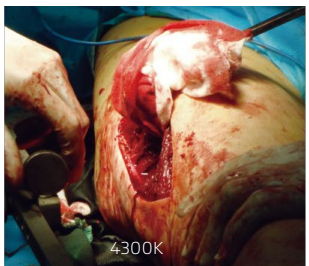
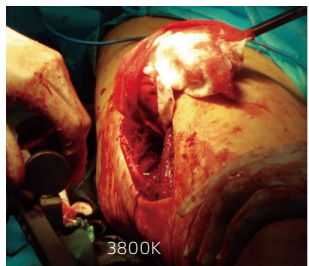






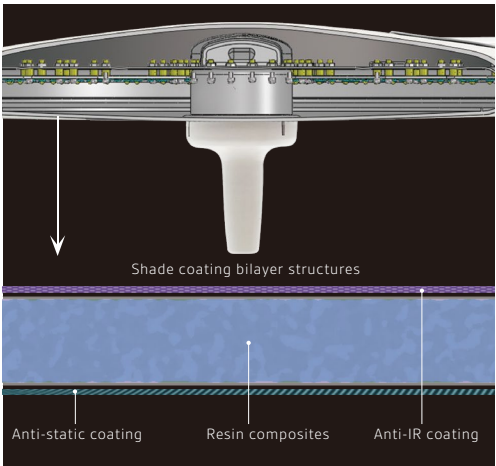
### Clearness

White LED light without colored cast shadows guarantees clearer vision of tissues.



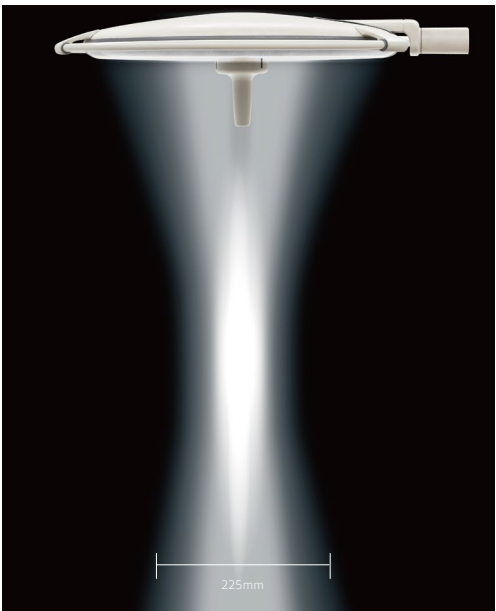
### Quality

The light screen of OL9500 is made of synthetic resin. It is anti-infrared, scratch-proofed and anti-static. The screen is covered with 2H hardness coating which makes the product more durable. It's anti-infrared coating also prevents the desiccation of patient's tissue. Its anti-static coating prevents the absorption of floating particles. OL9500 has detachable and sterilizable handle made by PSU Polysulfone which can withstand heating up to 135°C. It also has spring arm imported from Germany which allows positioning without drifting.



### Precise

It has multi-lens structure with patented focus technology which can deliver light spot with a diameter up to 250mm and a light depth up to 1,400mm. Its illumination can reach up to 1,600 lux, guaranteeing a clearer vision for better lighting condition during thoracic and burn surgery. It also has two independent LED bulbs which provide basic illumination environment for endoscopic surgery.



### Safety

The multi-lens matrix structure with patented focus technology prevents total blackout when one of the light modules fails. This will ensure the safety during the surgery.



### Comfortable

With patented adjustment electronic program, OL9500 emits steady and consistent lighting to keep the illumination at a constant value. The control panel consists of advanced microprocessor which allows for easier intensity adjustment from 30% to 100% (10 levels).



### Durable And Efficient

The LED bulbs have long life expectancy (up to 70,000 hours), providing a more reliable and cost-effective lighting to OR. OL9500 has low power consumption which can minimize the carbon footprint in the environment.



### Adaptability

OL9500 is HD compatible and it allows for low height ceiling mounting, meeting the requirements of modern OR setup.

